



PERFORMANCE
SIMPLICITY
VALUE

Precision and Reliability at an affordable Price



DOZER SOLUTIONS

**MACHINE GUIDANCE &
POSITIONING SOLUTIONS**

UNPRECEDENTED VALUE IN MACHINE GUIDANCE

GradeMetric™ Dozer Site Control & Guidance Positioning System

GradeMetric™ Dozer is packed with industry-leading technology. It is easy to use and delivered at an affordable price. The system can be installed and calibrated in less than 8 hours.

The VR500 all-in-one RTK Smart Antenna supports all machines ranging from smaller compact dozers and skid steers to large mining dozers.

The GradeMetric system is designed to fit seamlessly into your

existing site infrastructure using all the same design file formats and base station corrections. To ensure your peace of mind, all major components are covered by our best-in-class 3-year warranty.

New and experienced operators can dramatically increase accuracy, efficiency, and dependability with GradeMetric, resulting in significant ROI in your operations right away.



GradeMetric™ Key Features

- Access to all GNSS satellite constellations for maximum accuracy and maximum coverage in difficult environments; including GPS, GNSS, GLONASS, BeiDou, Galileo, and QZSS.
- Dynamic cut/fill to center or either side of the blade to allow operators to know the exact location and depth of their built or desired design surface without the time and cost of grade-checkers and survey professionals.
- 2D, 2.5D, 3D operation modes all come standard. Operators can create pads to match an existing or required height, and create batters, ramps, and slopes all on-site from the cab within seconds.
- Simplified user interface with multiple views including plan view, profile view, cross-section view, and more.
- Supports industry standard file formats including dwg, dxf, and LandXML.
- Easily locate lines and points yourself, checking site design and attributes as you go.
- Map projections or localized coordinate systems allow simple site coordination to existing coordinate systems or creation at new sites.
- Operators visualize the site in real time, eliminating delays and enabling fast and efficient completion of all site work including ramps, batters, trenches, slopes, and pads.

Cost Savings – Effective Immediately

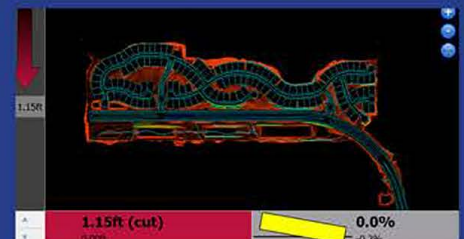
GradeMetric solutions offer immediate cost savings to your earthmoving activities. The simplified installation and calibration process gets your system up and running quickly. Our latest multi-frequency, multi-GNSS solution uses all available satellites in the sky as a standard feature, ensuring user access to a robust RTK solution in virtually any environment; reducing expensive machine downtime, especially in difficult environments like open-pit mines or in urban canyons. Use of the GradeMetric GNSS-based system allows operators to match a slope or extend a pad, ramp, or ditch along existing ground features. Create new ramps and basic roads in the field on the display and GO!



Intuitive Menu Design



Multiple Views



Supports large DTM's



Navigation to a Point

APPLICATION EXAMPLES

ROAD CONSTRUCTION



MATERIAL LAYERING

SITE PREPARATION



COARSE GRADING

MINING



PASS-2-PASS GUIDANCE

Use GNSS at Every Site

The embedded 2.5D function in GradeMetrix allows you to use the GNSS Guidance Technology for a vast array of simple useful applications, without the need for complex 3D files from a land surveyor.

Using only a few keystrokes you can easily create simple layers, single or dual slopes, ramps, and even roads; using your GNSS as a reference.

Also using the optional Hemisphere C631 base station you can provide RTK corrections to your dozer.

No survey points, no local transformations, or projections needed. In addition to the 3D model benefits, the 2.5D functionality will significantly speed up your work cycles and dramatically reduce your ROI time.

Your Benefits At A Glance

- **RIGHT FIRST TIME** – LESS PASSES - WORK FASTER - REDUCED OPERATOR SKILL REQUIREMENT REDUCED FUEL COSTS
- **MATERIAL SAVINGS** – OPTIMIZE REMOVE/REPLACE - IMPROVE TRANSPORTATION COST - CONTROL SOIL DISPOSAL COST
- **REDUCED SURVEY COST** – LESS SITE PREPARATION - LESS CHECKING - LESS REWORK - LESS STAKE REPLACEMENT
- **IMPROVED SAFETY** – LESS PERSONNEL AROUND MACHINES - OPERATOR STAYS IN MACHINE
- **3-YEAR WARRANTY** – BEST IN CLASS WARRANTY
- **EASILY ADAPTABLE** – PRIMARY COMPONENTS CAN BE MOVED EASILY AND QUICKLY BETWEEN MACHINES

Ruggedized Hardware

Hemisphere's GradeMetrix Dozer solution is powered by hardware components that have undergone extensive shock, vibration, and environmental testing to withstand the harshest job site conditions.

The system is designed in a unique format centered around the VR500 all-in-one RTK Smart Antenna. The VR500, with its integrated UHF radio and GNSS receiver requires a single cable connection to the IronOne display, resulting in the most simplified installation and calibration procedure on the market, and is the result of multiple decades of experience merging GNSS technology with precision applications.



PERFORMANCE - SIMPLICITY - VALUE



IRONONE Rugged Display

- 8" (1280 x 720 resolution) touchscreen
- Microsoft Windows™ operating system
- Sunlight Viewable display
- Easy and intuitive user interface
- Handles large 3D DTM project files
- Wi-Fi, Bluetooth, and ethernet support
- Integrated cellular modem for Ntrip corrections or remote/data support
- IP67 rating

VR500 GNSS RTK Smart Antenna

- Mastless position and heading RTK Smart Antenna for compact dozers and skidsteers to large mining dozers
- Multi-frequency, Multi-GNSS GPS/GNSS/GLONASS/BeiDou/Galileo/QZSS capable
- Integrated 400 MHz UHF radio
- Powerful WebUI with ethernet, CAN, serial, Bluetooth, and Wi-Fi connections
- IP69K and MIL-STD-810G

**How much could you be saving with a Hemisphere GNSS Solution?
Contact us now for information and to arrange a free trial.**

START SAVING IMMEDIATELY!!

Your local dealer

Also of interest

e-Survey RTK/GNSS Gear

GradeMetrix™ Excavator



PRECISION INTEGRATION

Hemisphere GNSS, Inc. is an innovative high-tech company that designs and manufactures positioning and heading products, services, and technology for use in agriculture, construction and mining, marine, OEM, and L-band correction services markets.

TEC-NICHE SOLUTIONS



Toll Free: 1-844-366-4677

info@tec-niche.com
www.tec-niche.com
www.grademetrix.com